

LABTOP₂[®] 200/250

INTEGRATED PUMP SYSTEM



FLOWTECH DIV.
UNIBLOC-PUMP, INC. USA

DESIGN

LABTOP® Integrated Pump System is a “plug in the wall” ready to use pump unit for small to medium size capacity applications.

At it's heart, the UNIBLOC®-PD rotary lobe pump is manufactured from the highest quality stainless steel material, eliminating quality issues as **ferrules are machined as part of the housing; no welds**. The pump is driven by an electric motor with an integrated speed controller that allows the operator to manipulate the unit through various functions using the Nema 4X (IP65) keypad or in an automatic mode.

MATERIALS

All pump component materials are FDA approved and/or carry the optional **USP Class VI** classification. Optional **Hastelloy C** and **AL6XN** available.

FEATURES

- Maintain high flow up to 60 psig
- Handles shear sensitive products very well
- Light weight and small dimension
- Can run dry for short period of time
- No rubber hoses that can rupture
- No shredding of rubber from inside hose
- LABTOP® operates equally well in both directions
- Includes extensive document package with each pump



APPLICATIONS

- Small filter feed
- Chromatography feed
- Metering of liquids
- Buffer solution transfer
- Small scale manufacturing

APPLICATIONS

LABTOP® 200/250 Integrated Pump System can be scaled up to larger LABTOP®s or stationary units with capacity up to 2000 LPM using the same pump design.

CAPACITY

LABTOP® 200 approximately 0.2 to 14 LPM (3.6 GPM)

LABTOP® 250 approximately 0.3 to 24 LPM (6.2 GPM)

Flow based upon 3cPs and 20 psig and ambient temp.

MAINTENANCE

The LABTOP® unit is engineered so that maintenance is brought to a minimum and can be carried out by the operator or company service technician. All units are thoroughly tested for full compliance and satisfactory operation prior to shipment. All LABTOP® units carry a 1 year limited warranty.

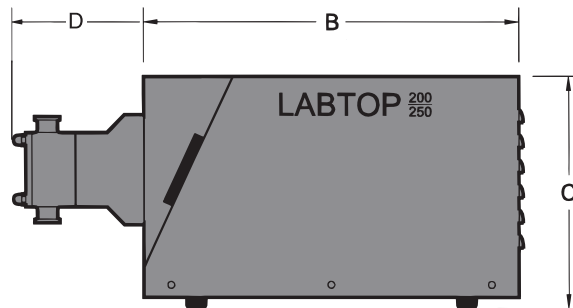
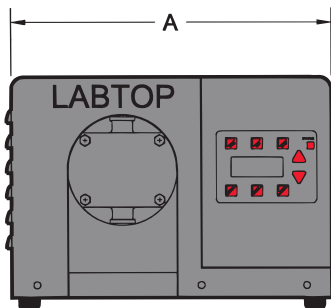


A
3
02-10

LABTOP[®] 2 SPECIFICATIONS

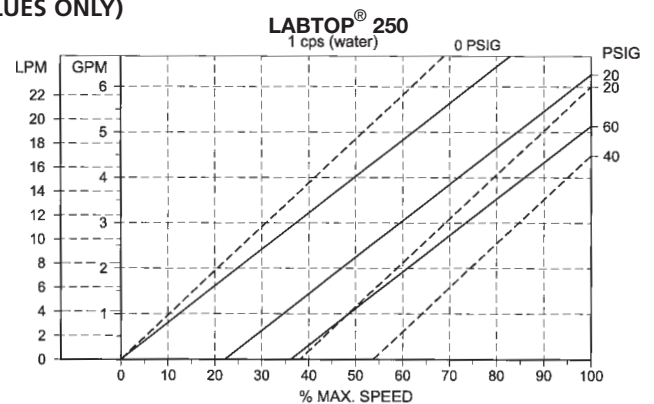
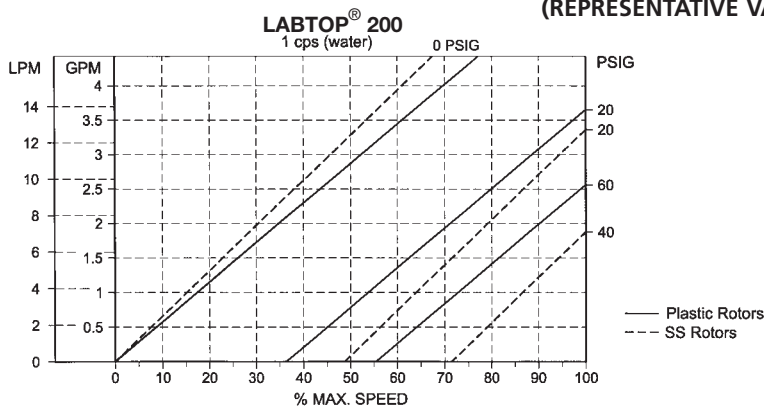
LABTOP[®] size	200	250
Port Size	1/2" or 3/4"	3/4"
Port Connection Type	triclamp	triclamp
Voltage Input / Max. Amp	115vac / 4.5amp 1x230vac / 2.2amp	115vac / 4.5amp 1x230vac / 2.2amp
Max. Ambient Temp	25°C (77°F)	25°C (77°F)
Max. Process/CIP Temp. (ss rotors)	60°C (140°F)	60°C (140°F)
Max. SIP Temp. (stand still)	125°C (257°F)	125°C (257°F)
Unit Weight (ss gearbox)	25 kg (56 lbs.)	25 kg (56 lbs.)
Standard Pump Supplied With	EPDM o-rings single mechanical seals stainless steel rotors	316L ss rotor housing 316L ss shafts 316L ss gearbox
Options Available:	jacketed front cover 0-10Vdc or 4-20mA input	USP Class VI plastic rotors 0-10 Vdc analog output auxiliary cooling fan

PHYSICAL DIMENSIONS

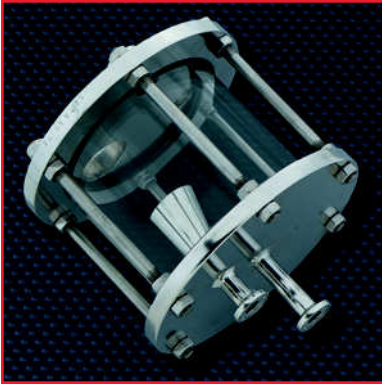


	LABTOP SIZE			
	200		250	
	mm	inch	mm	inch
A	318	12.6	318	12.6
B	460	18.1	460	18.1
C	231	9.1	231	9.1
D	89	3.5	97	3.8

CAPACITY CHARTS (REPRESENTATIVE VALUES ONLY)



OTHER PRODUCTS



◀ BUBBLE TRAP



◀ Y-STRAINER

JACKETED COVER ▶



CHECK VALVE ▶



◀ DIAPHRAGM VALVE



◀ BIOTECH VALVE

LABTOP® 300/350 ▶



UNIBLOC® PD ▶



LABTOP® and UNIBLOC® are registered trademarks

Technical changes without notice

Distributor:

FLOWTECH DIV.
UNIBLOC-PUMP, INC. USA

1701 Spinks Drive, Marietta, Georgia 30067-8925
Telephone: (770) 218-8900 Fax: (770) 218-8442
www.flowtechdiv.com info@flowtechdiv.com