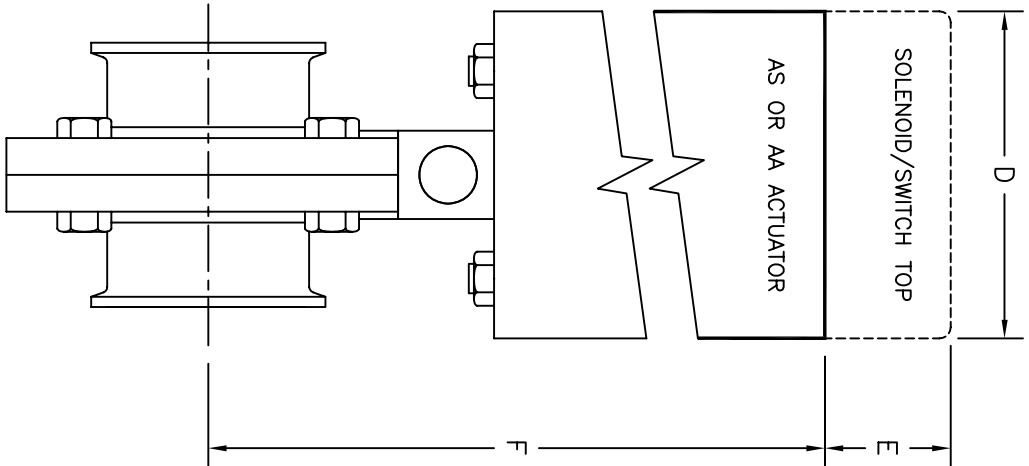
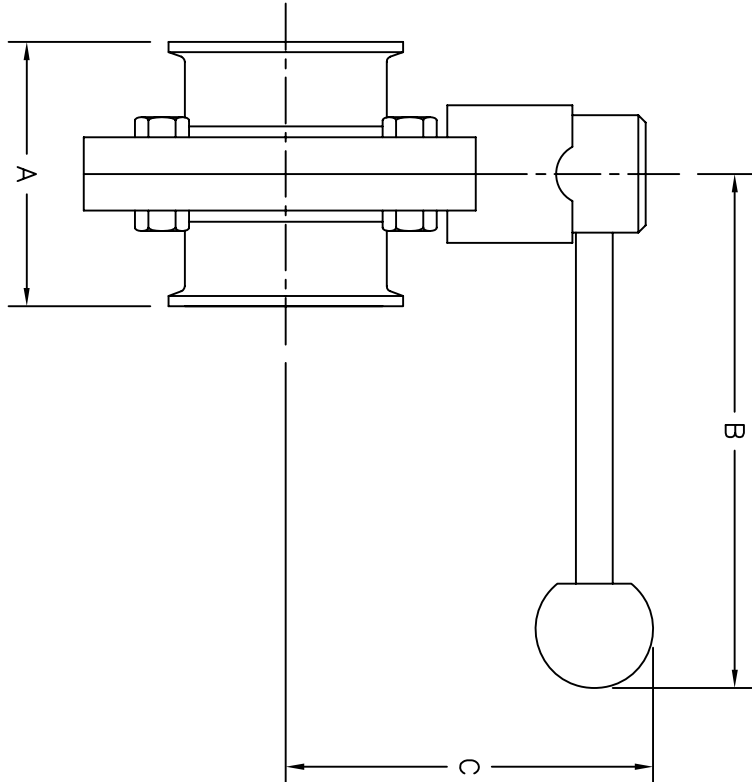


REVISIONS		DATE	BY
①	DESCRIPTION	June 8, 2009	PO
Added 8" and 10" dim.			



SIZE	A		B		C		D		E		F	
	mm	in.	mm	in.	mm	in.	mm	in.	mm	in.	mm	in.
1"	64	2.5	152	6.0	74	2.9	104	4.1	95	3.7	226	8.9
1½"	72	2.8	152	6.0	79	3.1	104	4.1	95	3.7	231	9.1
2"	72	2.8	225	8.9	86	3.4	104	4.1	95	3.7	236	9.3
2½"	76	3.0	225	8.9	96	3.8	104	4.1	95	3.7	259	10.2
3"	100	3.9	225	8.9	104	4.1	104	4.1	95	3.7	266	10.5
4"	104	4.1	271	10.7	112	4.4	104	4.1	95	3.7	277	10.9
6"	114	4.5	271	10.7	176	6.9	129	5.1	95	3.7	350	13.8
8"	116	4.6	271	10.7	200	7.9						
10"	116	4.6	271	10.7	226	8.9						

THIS DRAWING AND ALL IDEAS INCORPORATED IN ITS DESIGN ARE THE PROPERTY OF FLOWTECH, INC. ANY REUSE OR REPRODUCTION OF THIS DRAWING WITHOUT THE WRITTEN PERMISSION OF FLOWTECH, INC. IS STRICTLY PROHIBITED. FLOWTECH, INC. ACCEPTS NO LIABILITY FOR ANY DAMAGE TO ANY PROPERTY OR PERSONS ARISING FROM THE USE OF THIS DRAWING. FLOWTECH, INC. IS NOT RESPONSIBLE FOR ANY DAMAGE TO ANY PROPERTY OR PERSONS ARISING FROM THE USE OF THIS DRAWING.

FLOWTECH DIV. USA
UNIBLOC-PUMP, INC.

DWG. TITLE: #43 BUTTERFLY VALVE
UNIBLOC-PUMP, INC. USA

SCALE: 1:1
DATE: 03/28/06
BY: BAP
CHECKED: APP'D
DRAWN: APP'D

FINISH: (UNLESS NOTED ON DWG.)
WEIGHT

SIZE: 1" - 10"
RELEASE DATE: MAR 28, 2006
SHEET: 1 OF 1

DWG. NO.: 430400