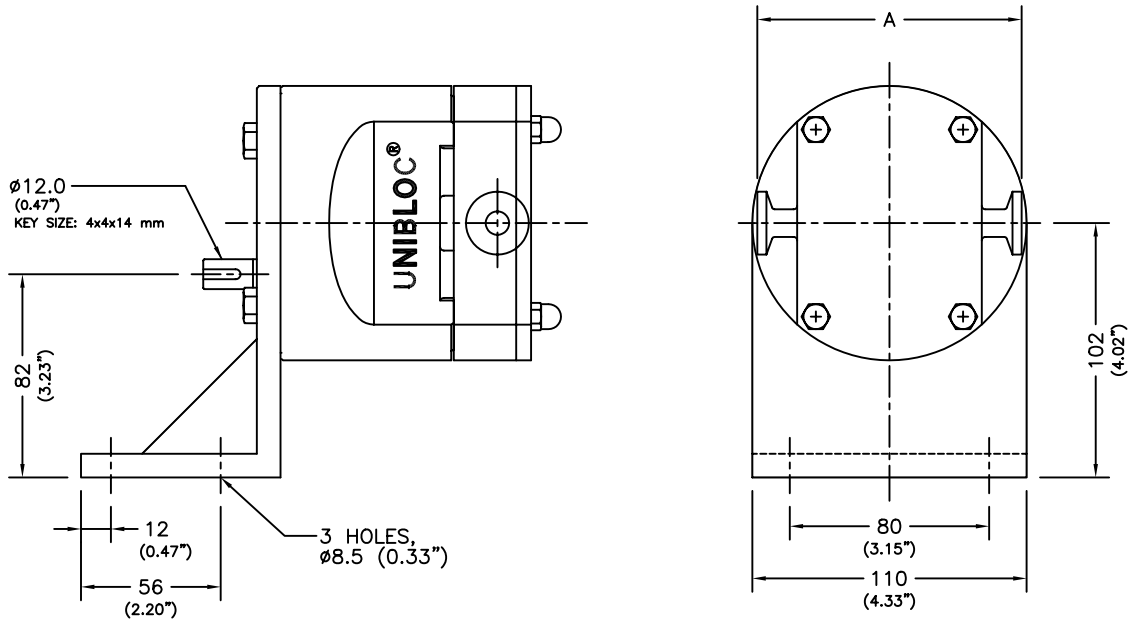
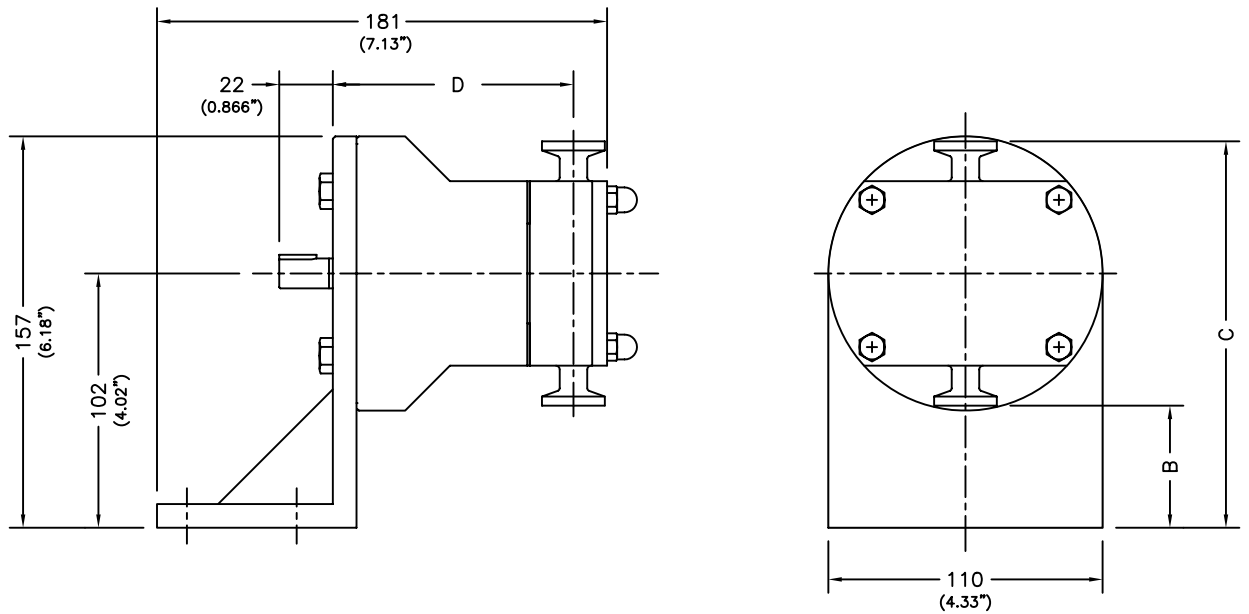


REGISTERED DESIGN. PATENTS PENDING.

REVISIONS			
SYMBOL	DESCRIPTION	DATE	BY



HORIZONTAL THROUGH-PUT



VERTICAL THROUGH-PUT

PORT TYPE	PORT SIZE	A		B		C		D	
		mm	in.	mm	in.	mm	in.	mm	in.
SANITARY TRICLAMP	3/8"	106	4.17	49	1.93	155	6.10	95	3.73
SANITARY TRICLAMP	1/2" (OPTIONAL)	106	4.17	49	1.93	155	6.10	95	3.73
SANITARY ISO CLAMP	DN10	102	4.02	51	2.00	153	6.02	91	3.59

THIS DRAWING AND ALL IDEAS INCORPORATED IN ITS DESIGN IS THE EXCLUSIVE PROPERTY OF FLOWTECH, INC. ITS ACCEPTANCE CONSTITUTES AN AGREEMENT THAT IT SHALL BE TREATED AS A CONFIDENTIAL DOCUMENT HEREON FOR NO OTHER PURPOSE THAN TO AID IN ITS CONSTRUCTION, THAT IF IT IS TO BE RETURNED UPON REQUEST, AND THAT IT IS NOT TO BE REPRODUCED OR COPIED EXCEPT AS AUTHORIZED IN WRITING BY FLOWTECH, INC.

DRAWN BY: DATE: _____
 CHECKED: _____
 APP'D: _____
 SCALE: _____
 ALL DIMENSIONS IN MM

UNIBLOC®-PD
 TEKNOFLOW, INC. ATLANTA, GA USA

DWG. TITLE
GENERAL DIMENSIONS

SIZE: **200-0** DWG. NO.: **D200-0**
 RELEASE DATE **AUG. 16, 2005** | SHEET **1 OF 1**