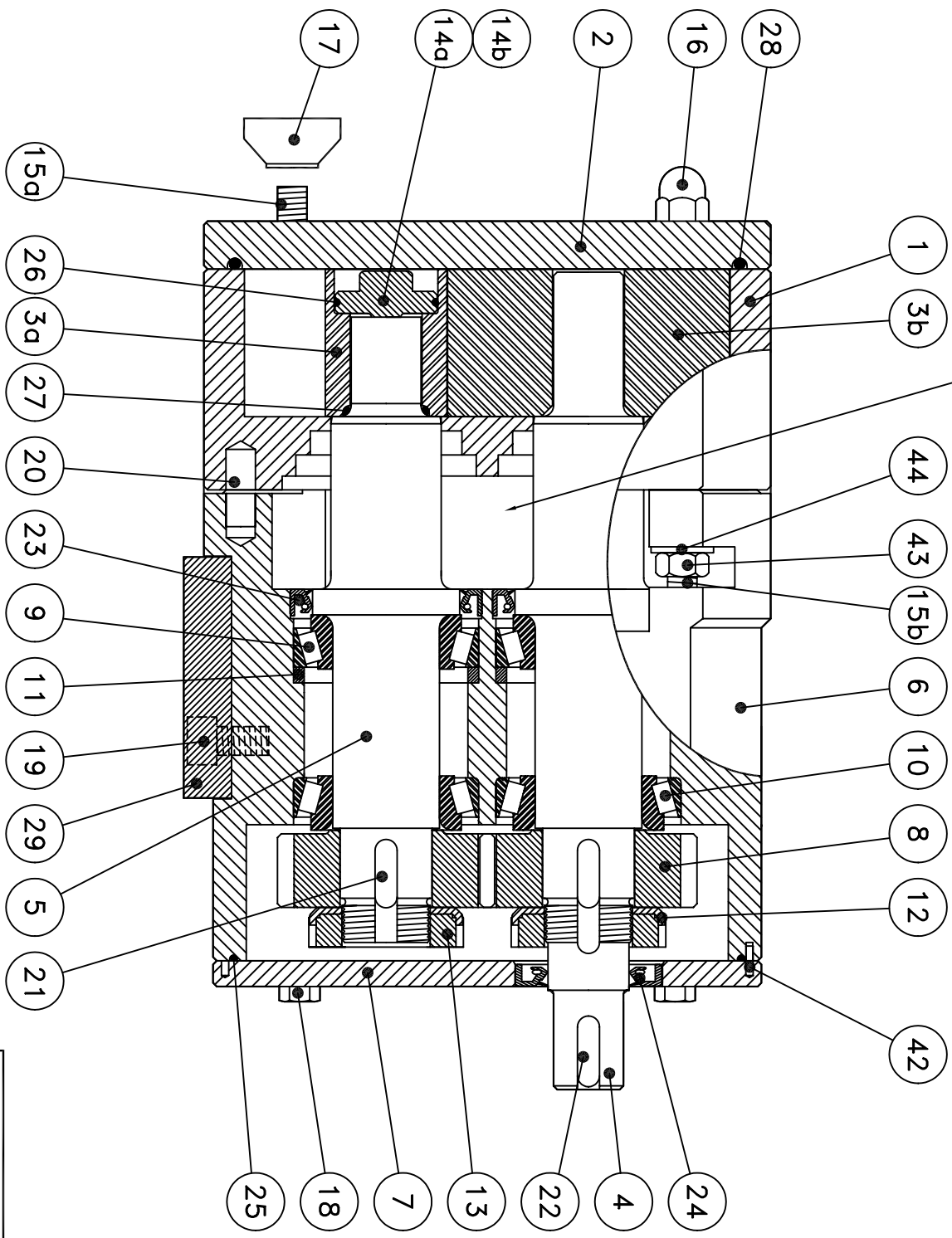


SEE DWG. G804 & G808
FOR SHAFT SEAL PARTS



REV	DESCRIPTION	DATE	BY
1	ADDED 15b HOUSING STUD	MAR 25, 2005	BAP

NO.	PCS.	DESCRIPTION
44	4	WASHER
43	4	HEX NUT
42	1	DOWEL PIN
29	1	FOOT
28	1	ROTOR COVER O-RING
27	2	ROTOR-SHAFT O-RING
26	2	ROTOR BOLT O-RING
25	1	O-RING
24	1	REAR OIL SEAL
23	2	FRONT OIL SEAL
22	1	DRIVE SHAFT KEY
21	2	KEY
20	2	DOWEL PIN
19	4	BOLT
18	4	COVER BOLT
17	4	HAND NUT
16	4	DOME NUT
15b	4	HOUSING STUD
15a	4	FRONT COVER STUD
14b	2	ROTOR BOLT (SLOTTED)
14a	2	ROTOR BOLT (HEX)
13	2	SLOTTED NUT
12	2	TAB WASHER
11	2	SHIM RING
10	2	REAR BEARING
9	2	FRONT BEARING
8	2	GEAR
7	1	BEARING HOUSING COVER
6	1	BEARING HOUSING
5	1	LAY SHAFT
4	1	DRIVE SHAFT
3b	2	PLASTIC ROTOR
3a	2	METAL ROTOR
2	1	ROTOR COVER
1	1	ROTOR HOUSING

THIS DRAWING AND ALL BEARS INCORPORATED IN ITS DESIGN IS THE EXCLUSIVE PROPERTY OF FLOWTECH, INC. IT SHALL BE TREATED AS A CONFIDENTIAL DOCUMENT AND NO INFORMATION HEREIN IS TO BE RELEASED OR DISCLOSED TO ANY OTHER PARTY WITHOUT THE WRITTEN PERMISSION OF FLOWTECH, INC.

UNIBLOC®-PD
FLOWTECH DIV. ATLANTA, GA USA

DWG. TITLE
UNIBLOC-PD PUMP PARTS LIST

MATERIAL	FINISH (UNLESS NOTED ON DWG.)	DRAWN	CHECKED	SCALE	ALL DIMENSIONS IN MM
		JPZ		NONE	
WEIGHT		APPD			

SIZE
300-575

RELEASE DATE
MAY 21, 2001

DWG. NO.
G803

SHEET
1 OF 1