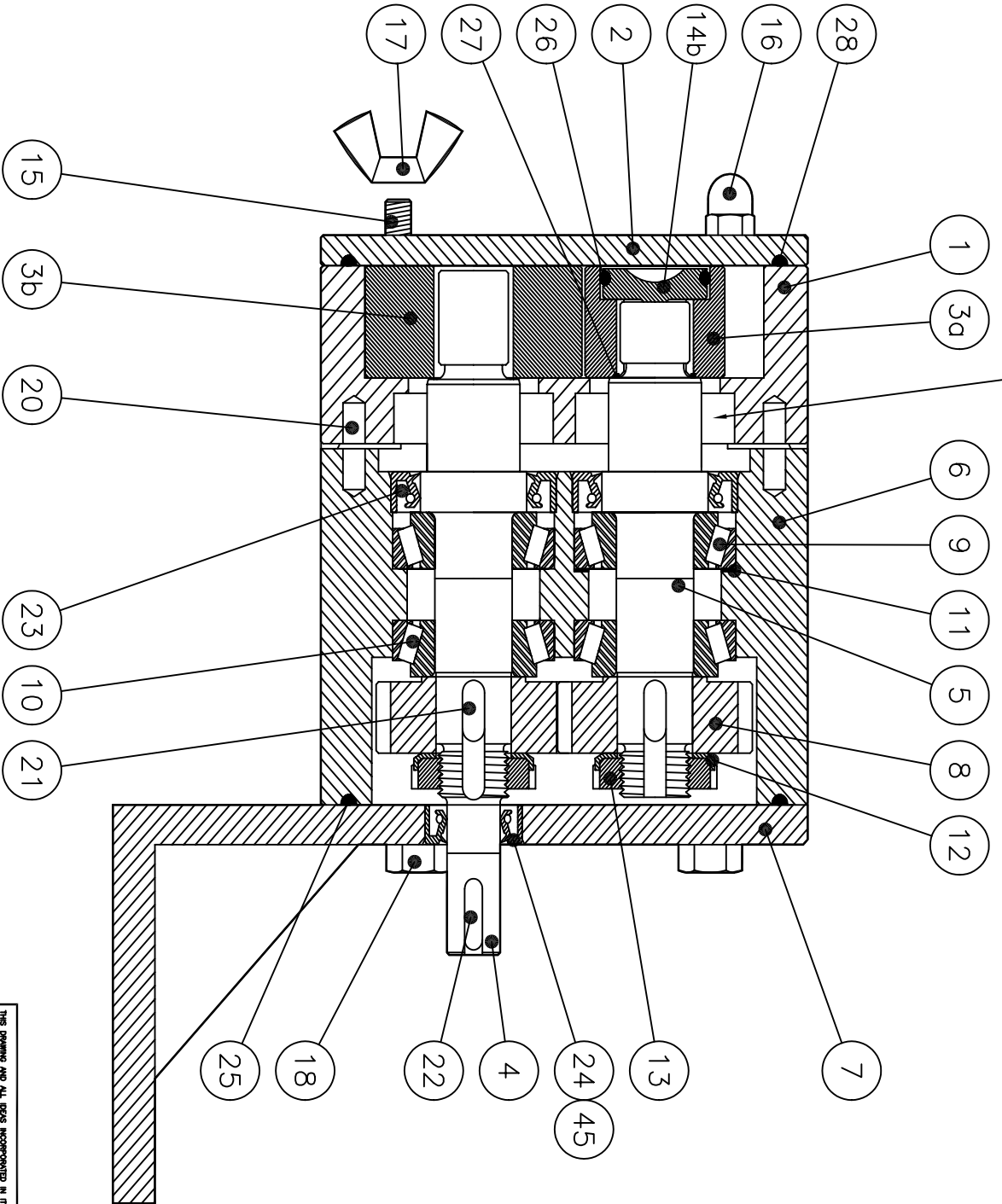


SEE DWG. G806 FOR  
SHAFT SEAL PARTS



REV. NO.	DESCRIPTION	DATE	BY

45	1	BLIND REAR OIL SEAL
28	1	ROTOR COVER O-RING
27	2	ROTOR-SHAFT O-RING
26	2	ROTOR BOLT O-RING
25	1	O-RING
24	1	REAR OIL SEAL
23	2	FRONT OIL SEAL
22	1	DRIVE SHAFT KEY
21	2	KEY
20	2	DOWEL PIN
18	4	COVER BOLT
17	4	HAND NUT
16	4	DOME NUT
15	4	HOUSING STUD
14b	2	ROTOR BOLT (SLOTTED)
13	2	SLOTTED NUT
12	2	TAB WASHER
11	2	SHIM RING
10	2	REAR BEARING
9	2	FRONT BEARING
8	2	GEAR
7	1	BEARING COVER
6	1	BEARING HOUSING
5	1	LAY SHAFT
4	1	DRIVE SHAFT
3b	2	PLASTIC ROTOR
3a	2	METAL ROTOR
2	1	ROTOR COVER
1	1	ROTOR HOUSING
NO.	PCS.	DESCRIPTION

THIS DRAWING AND ALL REFS. INCORPORATED IN ITS TITLE ARE THE PROPERTY OF FLOWTECH, INC. NO PARTS OR INFORMATION CONTAINED HEREIN ARE TO BE REPRODUCED OR TRANSMITTED IN ANY FORM OR BY ANY MEANS, ELECTRONIC OR MECHANICAL, INCLUDING PHOTOCOPYING, RECORDING, OR BY ANY INFORMATION STORAGE AND RETRIEVAL SYSTEM, WITHOUT PERMISSION IN WRITING BY FLOWTECH, INC.

**UNIBLOC®-PD**  
FLOWTECH DIV. ATLANTA, GA USA

MATERIAL	BY	DATE	DWG. TITLE
FINISH (UNLESS NOTED ON DWG.)	DRAWN	JPZ	UNIBLOC-PD PUMP
WEIGHT	CHECKED		PARTS LIST
SCALE	APP'D	NONE	SIZE
ALL DIMENSIONS IN MM			200,250,275
			DWG. NO. G805
			RELEASE DATE MAY 21, 2001
			SHEET 1 OF 1

REGISTERED DESIGN; PATENTS PENDING