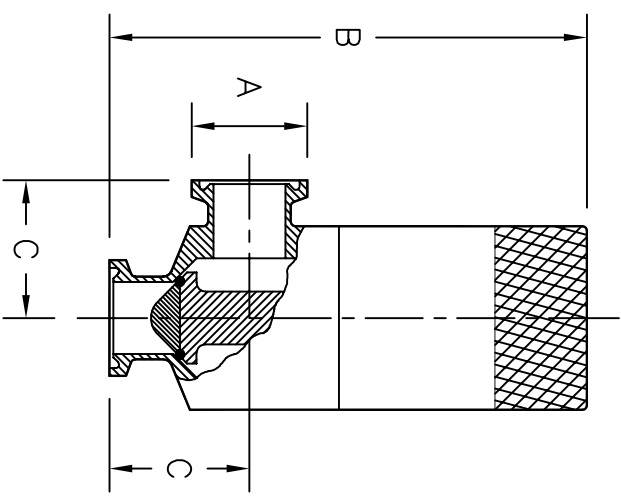


MATERIAL		FINISH (UNLESS NOTED ON DWG.)		WEIGHT	
BY	DATE	DRAWN	CHECKED	APPR'D.	SCALE
<p>THE DRAWING AND ALL USING INCORPORATED IN THE DESIGN IS THE EXCLUSIVE PROPERTY OF FLOWTECH, INC. THE SOCIETY OF PROFESSIONAL ENGINEERS AND ARCHITECTS HAS REVIEWED THIS DRAWING FOR CONFORMANCE WITH THE REQUIREMENTS OF THE NATIONAL BOARD OF BOILER AND PRESSURE VESSEL INSPECTION CODE. THIS DRAWING IS NOT TO BE REPRODUCED OR COPIED EXCEPT AS AUTHORIZED IN WRITING BY FLOWTECH, INC.</p>					
		<p>TEKNOFLOW, INC. ATLANTA, GEORGIA-USA</p>			
<p>DWG. TITLE: #46 PRESSURE RELIEF VALVE</p>					
SIZE	0.5" - 6.0"	DWG. NO.	460999	REV. NO.	1
SCALE	0.5" = 6.0"	RELEASE DATE	NOV. 9, 2003	SHEET	1 OF 1



A	B		C	
	mm	in.	mm	in.
1/2"	104	4.10	30	1.18
3/4"	104	4.10	30	1.18
1"	285	11.2	70	2.75
1 1/2"	285	11.2	70	2.75
2"	335	13.2	89	3.50
2 1/2"	335	13.2	89	3.50
3"	414	16.3	159	6.25
4"	434	17.1	159	6.25
6"	770	30.3	138	5.43

*STANDARD 316L WET END COMPONENTS