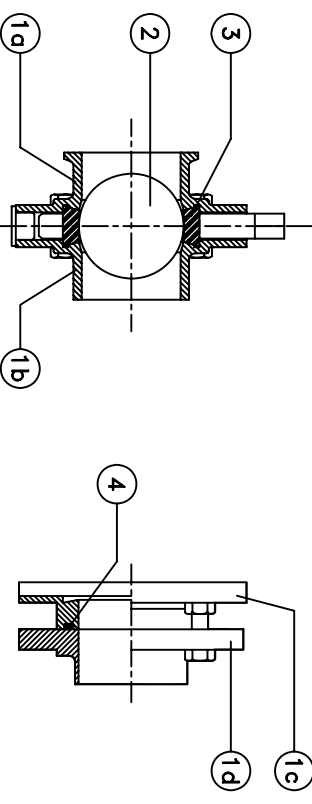
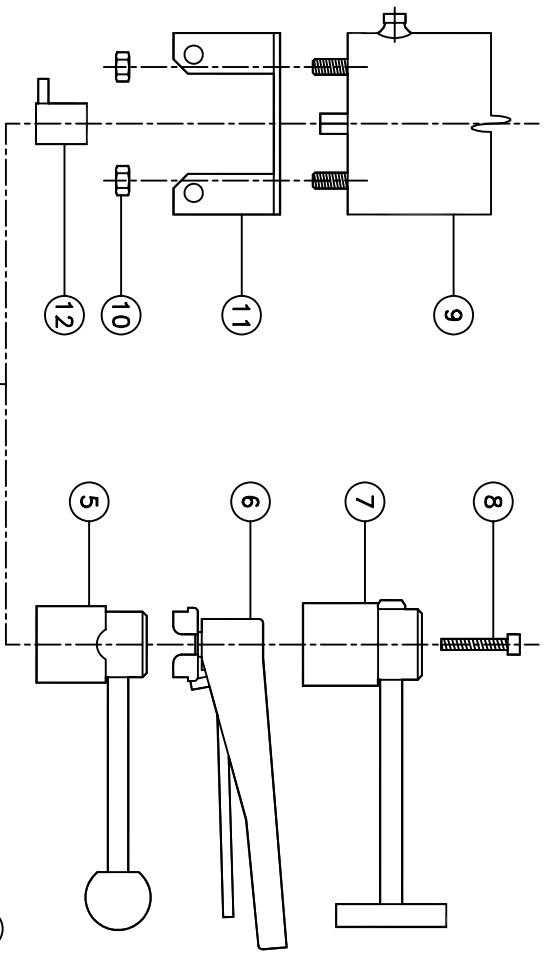


REVISIONS		DATE	BY
①	DESCRIPTION	NOV. 18/97	JPZ
②	Material details added,	AUG. 13/08	PO
③	corrections to Item 8 PN's		



ITEM	CLAMP BODY	WELD BODY	BODY	WELD BODY	DISC	SEAL SEAT	O-RING	HANDLE	HANDLE	HANDLE	SCREW	ACTUATOR	NUT	BRACKET	COUPLING
1"	430036	430050	430043	430057	430029	430001	430008	430084	430068	430076	4356-2	#8RK or #102K	4414-2	430020	430015
1.5"	430037	430051	430044	430058	430030	430002	430009	430084	430068	430076	4356-2	#8RK or #102K	4414-2	430021	430015
2"	430038	430052	430045	430059	430031	430003	430010	430084	430068	430076	4347-2	#8RK or #102K	4414-2	430022	430015
2.5"	430039	430053	430046	430060	430032	430004	430011	430084	430068	430076	4357-2	#8RK or #102K	4414-2	430023	430015
3"	430040	430054	430047	430061	430033	430005	430012	430085	430069	430077	4347-2	#102K	4414-2	430024	430016
4"	430041	430055	430048	430062	430034	430006	430013	430086	430070	430078	4347-2	#102K	4414-2	430025	430017
6"	430042	430056	430049	430063	430035	430007	430014	430087	430071	430079	4348-2	#133K	4414-2	430026	430018
8"	430042	430056	430049	430063	430035	430007	430014	430087	430071	430079	4348-2	#133K	4414-2	430026	430018

1. SEAL MATERIALS ARE SPECIFIED AS FOLLOWS:
 #-E (EPDM)
 #-S (SILICONE)
 #-V (VITON)

- ② 2. Item No. 1a and 1b comes 304ss or 316ss
 Item No. 2 in 316ss
 Item No. 5-7 in 304ss
 Item No. 8 in 18-8ss
 Item No. 9-10 in 304ss
 Item No. 11 in 316ss
 Item No. 12 in 304ss

THIS DRAWING AND ALL IDEAS INCORPORATED IN IT ARE THE PROPERTY OF FLOWTECH, INC. ANY REUSE, REPRODUCTION, OR TRANSMISSION OF THIS DRAWING WITHOUT THE WRITTEN PERMISSION OF FLOWTECH, INC. IS STRICTLY PROHIBITED. FLOWTECH, INC. ACCEPTS NO LIABILITY FOR ANY DAMAGE, LOSS, OR INJURY RESULTING FROM THE USE OF THIS DRAWING. FLOWTECH, INC. IS NOT RESPONSIBLE FOR ANY DAMAGE, LOSS, OR INJURY RESULTING FROM THE USE OF THIS DRAWING. FLOWTECH, INC. IS NOT RESPONSIBLE FOR ANY DAMAGE, LOSS, OR INJURY RESULTING FROM THE USE OF THIS DRAWING.

FLOWTECH DIV.
 UNIBLOC-PUMP, INC. USA

DWG. TITLE: #43 BUTTERFLY VALVE COMPONENTS
 DWG. NO.: 430994
 SCALE: NO SCALE
 RELEASE DATE: APRIL 16, 1998
 SHEET 1 OF 1